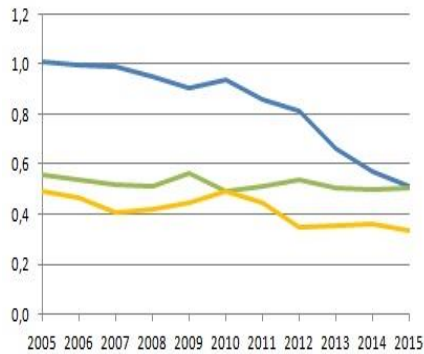
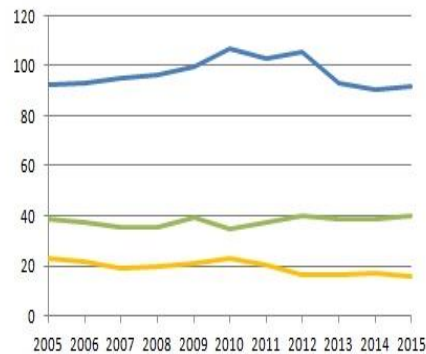




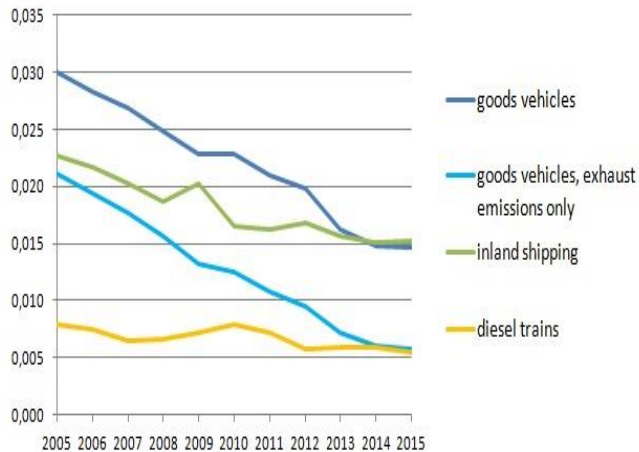
NOx



CO₂ (actual)



PM₁₀



Challenges Regarding Innovation in Inland Waterway Transport

European Barge Union
Brussels, 9 March 2017

5 statements for the debate

Mark Frequin
DG Mobility and Transport
The Netherlands



Most sustainable mode of transport for the future?

**IWT is the green alternative
(first inland barge on LNG)**



**This may change overnight
(Nikola truck on hydrogen)**





Innovation blocked by delayed replacement

Too many years of return on investment



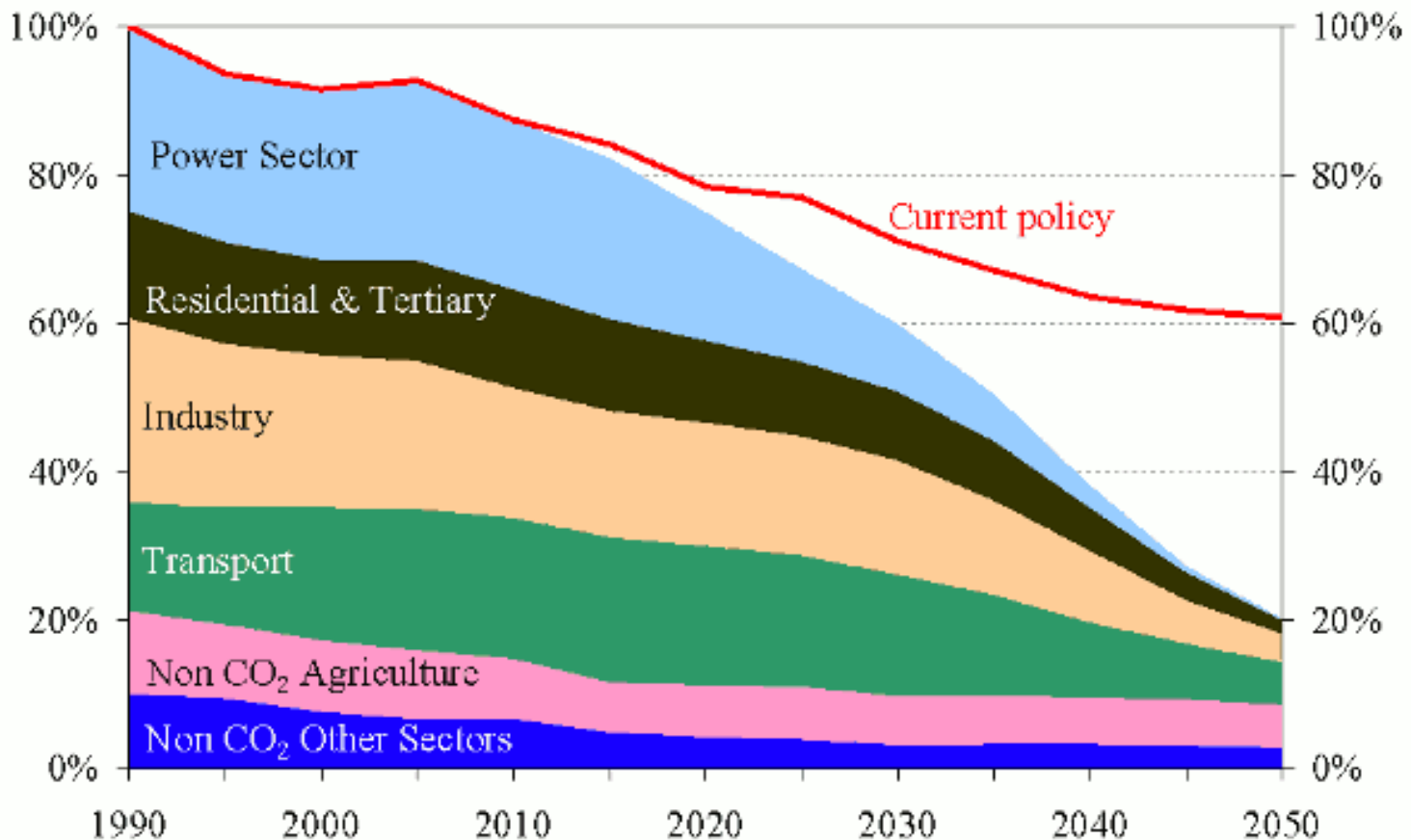


No funding for greening without a greening fund





What could be the price for CO₂ in transport?





IWT sector and public authorities ritual dances or forward together?

